



promuje  
**łódzkie**



**YOUR SAFETY  
IN ŁÓDŹ PROVINCE**  
**INFORMATIONS FOR  
THE PARTICIPANTS**

**ŚDM**  
**KRAKÓW 2016**

**POLICE OF ŁÓDŹ PROVINCE**



information for tourists  
+48 22 278 77 77  
+48 601 888 844  
(only for Polish operators phone numbers)  
tourist emergency helpline  
+48 608 599 999

## Dear **ŚDM** participants!

One of the most important Police task is to react to all possible situations that may cause hazard to human life and health or to property.

**This is what we are in power to do for Your safety!**

To realize what actions (or lack of action) may cause certain hazards, to know what is allowed and forbidden, and that breaking the law brings you sanctions - **this is your own safety basis!**

Please read this guide to feel safe during ŚDM in the Łódź region.

**Let us join you and care for your security!**



Please find a \*.PDF guide at:  
[www.lodzka.policja.gov.pl](http://www.lodzka.policja.gov.pl)









Be ready to confirm your identity –  
always have on you - national ID, passport,  
valid travel document, visa (if applicable).

**Tips:** make photocopies of your Passport data page, as well as your Visa or Residence Card – and keep them in a different place than the originals

**Have you lost** your money, plane tickets, or passport? Have you had a road or traffic accident? Do you need medical assistance? Visit the Police and the Consular Office or Diplomatic Mission of your home country



**More information at:**

[www.msz.gov.pl/en/ministry\\_of\\_foreign\\_affairs](http://www.msz.gov.pl/en/ministry_of_foreign_affairs)

You can also visit a **free legal assistance center**  
for registered **SDM** participants  
**time:** 19-25 July 2016



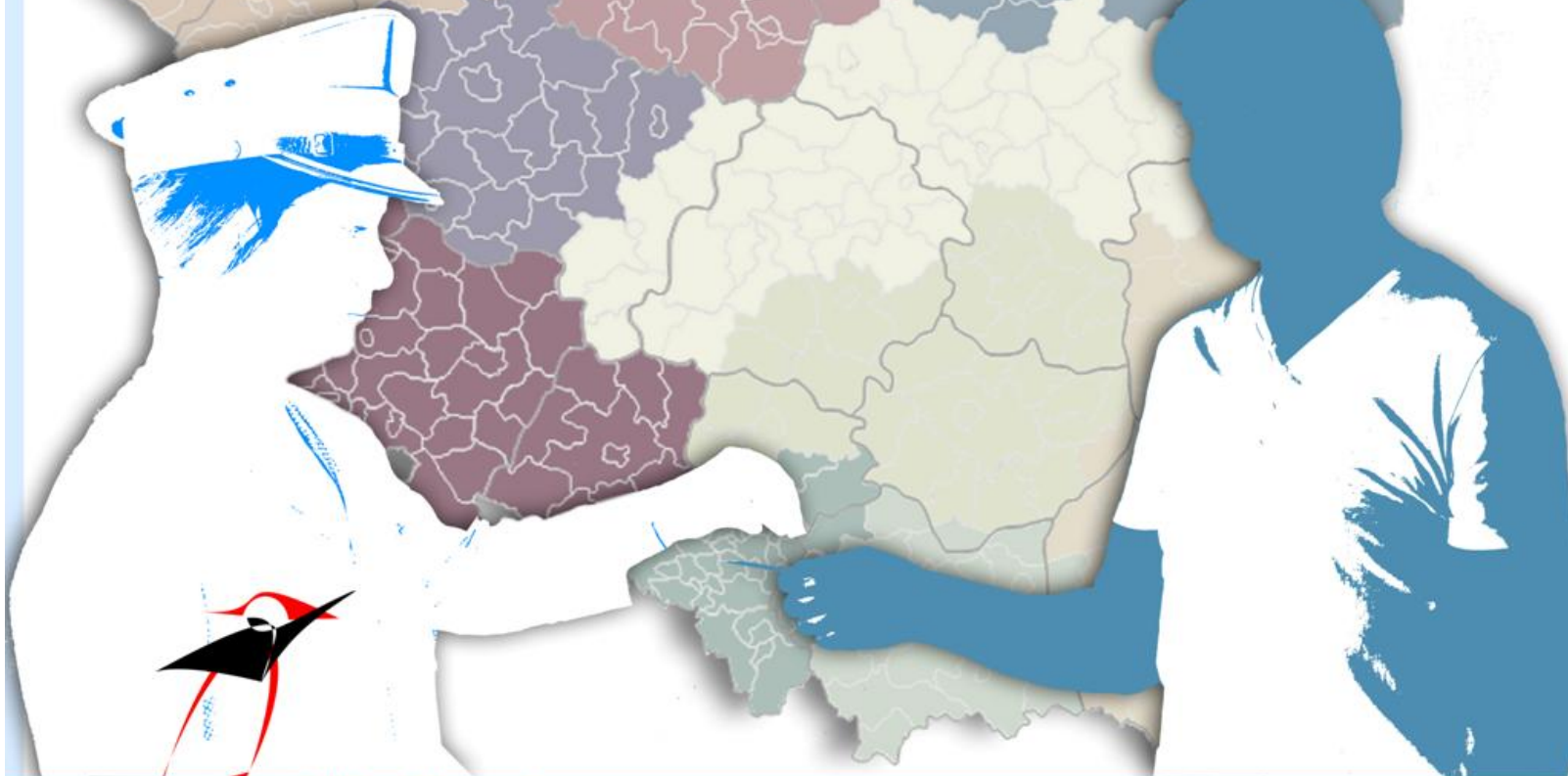
**Monday through Friday 2pm-5pm**  
**address:** Okregowa Rada Adwokacka w Łodzi  
199, Wolczańska Street  
T. (+48) 532 677 139





You may be requested  
to show the proof of legal right  
to stay in Poland

*please trust the officers*  
who work to ensure your safety!



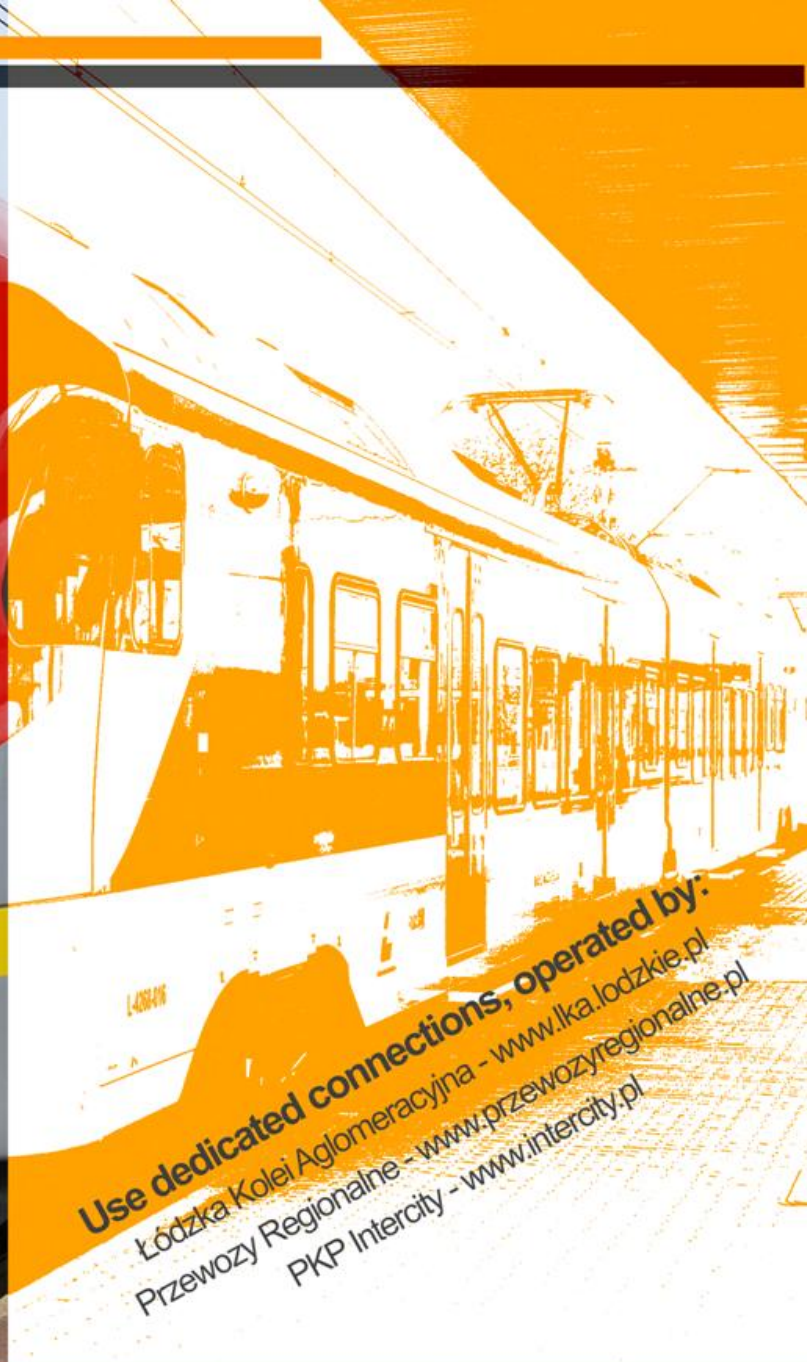
**Please remain alert** and attentive  
in public transport means  
Do not leave your bag or backpack unattended!  
Protect yourself against thieves!



**Note** some cheaters may pretend  
they look for help or support!







**Use dedicated connections, operated by:**  
Łódzka Kolei Aglomeracyjna - [www.lka.lodzkie.pl](http://www.lka.lodzkie.pl)  
Przewozy Regionalne - [www.przewozyregionalne.pl](http://www.przewozyregionalne.pl)  
PKP Intercity - [www.intercity.pl](http://www.intercity.pl)



**Be responsible for other people around !**

Keep to the group –  
report any people leaving the group!

If you notice a person is missing or hijacked –  
report to appropriate services!

React (first aid and/or call 112) if you see  
someone faint or lose consciousness



# Beware of addictive substances

Stay away from psychoactive substances  
or any substances of unknown source

Possessing narcotic  
drugs is punishable

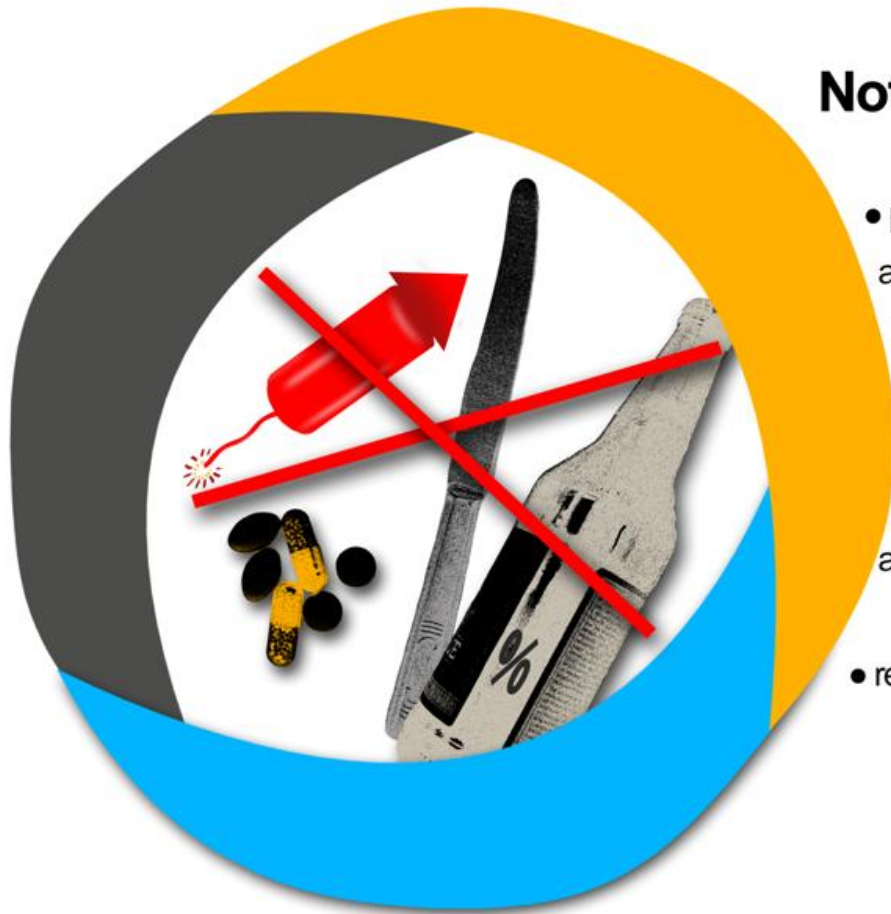
It is forbidden to smoke  
tobacco in public areas



**Everyone is different and great –**  
please observe cultural and legal differences!



**Be tolerant –**  
do not accept violations of personal integrity,  
and in case you feel your  
personality rights are violated,  
report to the Police or appropriate services!



## Note that:

- pyrotechnic materials, weapons and/or dangerous objects, as well as use of alcohol or illicit drugs are all forbidden in public areas
- if there is panic in the crowd – stay calm and obey the instructions from security personnel
- report any danger

*If you witness of a dangerous event  
or see an accident – call*





° BCE ECB EZB EKT EKP 2002

**Beware** of counterfeit money that  
may be introduced into circulation!



**Skimming** – make sure your cash  
machine or card terminal is safe!

**EURO**  
**EUR**





# visit łódzkie!

